

# MEMBERS BENEFITS CLUB WINTER CATALOG 2024

- 220 Partners
- Over 300 offers
- 6.000 Card holders

Bonuses that employers can offer their employees for free.  
Immediate discounts for cardholders. Increased foot traffic  
and publicity for shops in Luxembourg and the Greater Region.

**Paul Schonenberg**  
**Chairman and CEO**  
**Amcham.lu**



Dear AmCham Members, Partners, and Friends,

Welcome to the winter 2024 AmCham member benefits club catalog!

Over 300 partner companies and locations offer a 10% discount or more to AmCham card holders and their partners.

Our goal is:

- 1) Help employees to get more value for their money
- 2) Help the retail sector to find and keep clients

Please use this catalog for your Christmas holiday shopping and throughout next year.

With our respect and best wishes!

*Paul Schonenberg*



## American Chamber of Commerce AmCham Luxembourg

### Why Become a Member?

#### Facts and Figures:

110 AMCHAMs worldwide

44 AMCHAMs in Europe

About 3 million companies  
affiliated to AMCHAM

#### Benefits:

Discussions with top management representatives

Prioritising of business opportunities networking

Meeting committee members on various affairs

### About Us

- We are an independent, self-funding ASBL
- English speaking
- Expat focused
- Affiliated with the US Chamber and the Federation of American Chambers in Europe
- Focused on the entire Luxembourgish economy, rather than just one sector
- Dedicated to ensuring Luxembourg is and remains the best place in Europe for international companies and their employees
- With great demographics: 30% US, 20% Luxembourg, 50% companies from around the world
- We have about 370 company members

### Our Services

1. Networking - we connect the right people with the right people
2. Information about how Luxembourg works
3. Problem solving
4. Lobbying
5. Members Benefits Club

# Networking

About 30 Events per year:

- Conferences
- Networking Cocktail Parties
- ABAL lunches



**Sign up** as a new user to register for events

**Subscribe** to the newsletter to stay updated on events



## Benefits

### **General Membership:**

- To have access to conferences, forums, workshops, governmental events, trainings, social events, etc



### **Business Membership:**

- Strengthen leadership via networking and meeting top management representatives

### **Publicity:**

- Boost your brand name locally and Internationally on social media

# Information on How Luxembourg Works

- A **DOING BUSINESS IN LUXEMBOURG** book every five years (it is a book of information on how to run a business in Luxembourg).
- **BENEFITS** - increasing visibility about your business (logo, brand name, publications) via AmCham channels and website.



- Weekly Digital newsletter
- Sent to over 10000 people
- Cover Interviews
- Upcoming Events
- AMCHAM Member Benefits Club
- Member news
- AMCHAM news
- What's on in Luxembourg

# Problem Solving Committees

- Find better solutions for unsatisfactory current policies and practices
- Every business field of activity has a group of dedicated experts keeping an eye on the sector activities they represent and promoting global best practices for their sectors.

## Benefits:

- Meeting CEOs from large corporations and attending business meetings organized in Luxembourg.
- AmCham members are eligible to become members of boards, committees, Ad-Hoc, working groups, etc.

ABAL Committee (ABAL)	Private Equity Committee (PEC)
Corporate Services Committee (CSCOM)	Real Estate Committee (RECOM)
Digital AMCHAM (DCOM)	Resourcing/Training/Development Committee (RTDCOM)
Diversity Committee (DIVCOM)	Risk, Audit and Compliance Committee (RAC)
Education Committee (EDCOM)	Senior Advisors Committee (SAC)
Entrepreneur Committee (ECOM)	Seniors Committee (SECOM)
Financial Services Committee (FINCOM)	Space Committee (SCOM)
Human Resources Committee (HRCOM)	Tax Committee (TCOM)
Insurance Committee (ICOM)	Tools4lux Committee (T4COM)
Legal Committee (LCOM)	Ukrainian Relocation and Support Initiative (URSI)
Marketing Committee (MARCOM)	

# Lobbying

- Lobbying with the government to ensure Luxembourg remains optimally business-friendly, attractive, and profitable for international companies and international employees

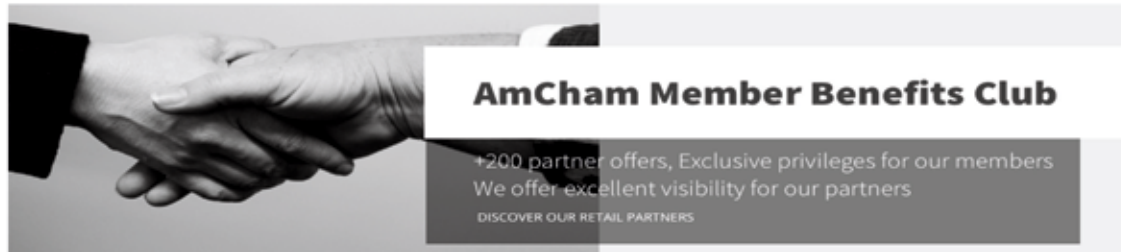
<https://www.amcham.lu/newsletter/124-essay-8-things/>

## Benefits:

- We fight for your rights
- Access to governmental regulations and updates
- Participating in the decision-making process of business clusters



# Members Benefits Club

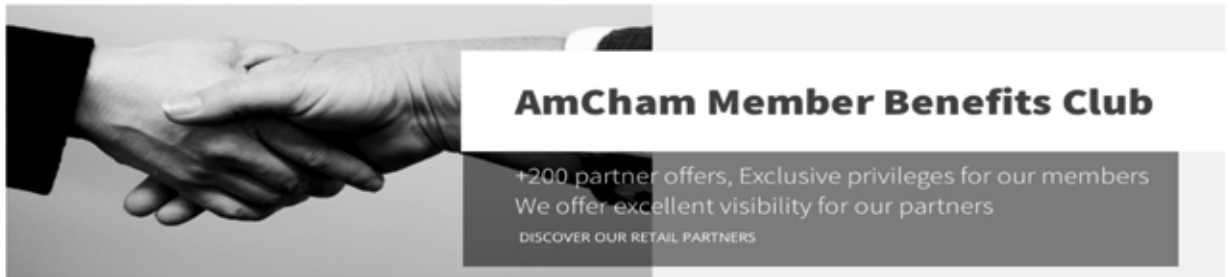


**Member Benefits Club (MBC):** every category of AmCham membership gets a certain number of free MBC cards, entitling the designated person to discounts at our quality Luxembourg and Grand Region partners. Additional cards can be purchased at very low cost. MBC cards will (in the near future) also entitle cardholders access to a digital library filled with business and professional information and advice.

## Benefits for Members



- Every paid membership has a certain number of free cards:
  - Chartered Members: 300 cards
  - Corporate Members: 150 cards
  - Small Entrepreneurial Companies: 20 cards
  - Students, Senior, Micro Co, Affiliates: 2 cards
- Additional cards for employees and their spouses can be ordered from AmCham for 10 Euros per card.
- Members get immediate discounts in the partner shops
- Our partners get free publicity and new customers from a 10,000-affiliated membership base
- Our support to the economy in Luxembourg



## AmCham Member Benefits Club

+200 partner offers, Exclusive privileges for our members  
We offer excellent visibility for our partners

DISCOVER OUR RETAIL PARTNERS

## How to Become a Partner:

Please send us your contact details to [Mbc@amcham.lu](mailto:Mbc@amcham.lu):

- Name of the Partner-shop: ...
- Owners name: ...
- Address: ...
- Email: ...
- Mobile phone: ...
- Discount offer you would like to make: ...

**Help yourself and support the local retailers throughout the year – AMCHAM for NON-AMCHAM members to purchase an AMCHAM Benefits Club Card to get discounts at local retailers.**

The MBC is becoming quite popular, as it is accepted in nearly 160 business partners including McArthurGlen Messancy Outlet (just on the border in Belgium border) and the numbers of Participating stores increases every week.

With the goal of assisting local businesses and retailers, the AMBC card offers at least 10% minimum discount with all AMBC partner stores.

With the objective of helping our local business and retailers, with the AMBC card you are guaranteed to receive a 10% minimum discount, in all the AMBC partner shops. Info: <https://www.amcham.lu/amcham-benefits-club/>

## How to Get This AMBC CARD?

If your company is already member of the American Chamber of Commerce, please contact your HR representative and request your card. If you are NOT an AMCHAM member, select the "Purchase card online", select add to cart and proceed to check out and complete the payment method.

If you want to order more than one card, please email us at [MBC@Amcham.lu](mailto:MBC@Amcham.lu). Non-Member cards can be purchased for a price of 100 euros. The sooner you order your card, the sooner you make take advantage of the shopping discounts. If you wish to be notified about new promotions, please create an account and consent to be emailed.

## Your Friendly and Flexible All-in-One E-Learning Design Partner in Luxembourg



We are a **Luxembourg-based e-learning design agency** with extensive international experience and expertise in combining learning psychology with cutting-edge technology to accelerate employee development within organizations.

**Choose us** for transforming your ideas and your company knowledge into impactful digital learning experiences:

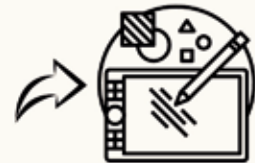
- engaging digital or hybrid onboarding programs
- building corporate learning academies
- making compliance training more appealing
- scaling soft skills training through A.I. assistants
- collaborative learning platforms



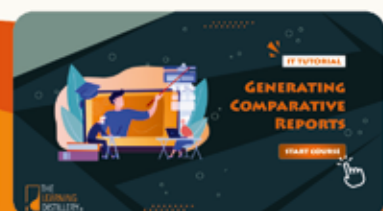
Let's have a  
discussion



We'll work our magic and present  
you with learning path storyboards.



All good, we will  
develop it.





# Açaí Luxembourg

**SUPER FRUIT SUPER FOOD**

NO ADDITION 0%

FOOD COLORING  
FLAVORING  
FOOD PRESERVATIVES

GLUTEN  
LACTOSE  
TRANS FAT

ONLINE STORE  
<https://acaifulx.sumupstore.com>

@acaifulxembourg

Empowered by:  
S4U LUX s.a.r.l.-s  
4, Rue de Moutfort Contern, L-5310  
Lu. RCS B249521

atom美  
ATOMY

## Special Offer

The set contains:  
Toner 140 ml  
Essence 45 ml  
Lotion 140 ml

ATOMY HOMME

BUY HOMME SKIN CARE SET

GIFT 📺  
TOOTHBRUSH

Register at [raldys27@yahoo.com](mailto:raldys27@yahoo.com) or on Facebook "atomyroofficial" and instagram "atomyofficial.lu".

Nearly 1 in 2 French people dream of setting up their own business. What about you? The Atomy platform offers you the opportunity to start your own turnkey business, without risk or investment, simply by using our products and recommending them to others! Earn points by purchasing everyday products and increase your income. Build your network and increase your earnings. You too can transform your life like thousands of others, thanks to Atomy.

# ACL



## Safe and easy mobility for your employees

Let ACL Benefits help you foster a sense of loyalty among your employees, whether they are residents or cross-border commuters.

Make it easy for them to travel with the gift of ACL membership and the attractive package of services and benefits that comes with it.



**24/7 onsite breakdown assistance** anywhere in Europe



**Rental services and technical diagnostics**



**Free courtesy vehicle** in the event of a breakdown



**Discounts with our partners** (fuel, equipment, maintenance, etc.)

0000000000000000

Discover even more of the services available at [acl.lu](https://acl.lu)

# APV



**YOUR IDEA IN VIDEO?**



Commercial / Corporate / Motion Design 2D & 3D / Drone / Creative videos



Support Internet / TV / Cinema



for AMCHAM Members

6, rue Joseph Leydenbach | L-1947 | Luxembourg

[ap-videoclip.com](http://ap-videoclip.com)



At **"Art-Management"**, we specialize in connecting the worlds of art and business. We believe art is more than decoration — it's an investment in your company's image, culture, and success. Our mission is to bring carefully curated art into your workspace to enhance well-being, inspire creativity, and strengthen your brand identity.

**What sets us apart?** We focus on personalized art selections that resonate deeply with you, bringing energy and meaning to your environment.

**How?** Mainly through charity and bespoke art events - a special tailor-made customized event exclusively designed for your business growth and success.

**Why?** Because by buying, supporting, and promoting art, you show long-term trust in your brand.

The wide spectrum of **art consultancy** for the insurance, notary, public authorities, and private individuals, e.g. appraisal, expertise, authentication, art collection management, guiding through acquisition, etc. is provided by the official art expert certified by the Ministry of Justice of Luxembourg (expert d'art assermenté) Mme Oksana Polyanska, MA in history, art advisor.

oksana@art-management.lu +352-661-311205  
<https://www.art-management.lu>  
 #38, route d'Esch, 1<sup>st</sup> floor, L-1740 Luxembourg



"Art-Management" is proud to announce the cooperation with photographer **Tetiana Popyk (Tanita)**, who has gained international recognition—including distinctions in prestigious art competitions and features in esteemed American and European magazines.

With over 15 years of experience behind the lens, Tanita has become famous for her fashion photography, portraits, and art projects that aim to reflect the inner world. She truly stands out in Luxembourg's vibrant art scene due to her continuous, bright experiments that evoke admiration and leave a lasting impression.

*Recent distinctions and awards:*

- PhotoBasel, Switzerland, 2024: Ethnoproject "Ukrainian Legends"
- NFINITY Group Exhibition, Florence Contemporary Gallery, Italy 2024.
- Book "100 Contemporary Ukrainian Photographers", Paris, France, 2024.
- PhotoVogue "The World of Vogue Talents": the most interesting voices in contemporary photography, 2021-2024.
- International Polo Tournament, Luxembourg, 2023: fashionable dogs in portraits "Being Human"
  - Luxembourg Art Prize 2021: Certificate of artistic achievement

+352 691 310 184 <https://tanitaphoto.lu> tetyana.popik@gmail.com



Premium micronutrient supplements  
from Luxembourg

*For sports and life - since 2018*



Innovative



Natural and vegan



Transparent



Sustainable



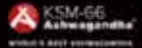
**VISIT OUR  
ONLINE STORE**



[www.beyond-nutrition.com](http://www.beyond-nutrition.com)



CREA<sup>PRO</sup>



# COUNTRY RADIO GILSDORF

THE FIRST AND ONLY COUNTRY  
RADIO STATION IN LUXEMBOURG

[www.countryradio.lu](http://www.countryradio.lu) (online stream)

+352 691 947 000

info@countryradio.lu



# COUNTRY & U.S. STORE LUXEMBOURG

THE BEST AND ONLY COUNTRY  
STORE IN LUXEMBOURG

Shop: [www.countryradio.lu](http://www.countryradio.lu)

+352 691 947 000

shop@countryradio.lu

*Discover the Essence of Italian Craftmanship*

GIN(E)PRO

*Quality, Handcrafted Spirits!*

*Gin(e)pro selects the finest Italian spirits to enhance your most precious moments.*

*Each bottle, sourced from leading Italian producers, is a testament to true craftsmanship.*

*Discover passion, tradition and unrivalled quality in every sip.*

*For more information, reach out to us at : [info@ginepro.lu](mailto:info@ginepro.lu)*

*Explore our exclusive collection at : [www.ginepro.lu](http://www.ginepro.lu)*





## Creative Academy Shop



**FASHION**



**HANDMADE  
JEWELLERY**



**DECO & GIFTS**

PROUD MBC PARTNER



AMCHAM.LU

**A COZY DESIGN  
BALANCING INNOVATION,  
FUNCTION, AND EMOTION,  
MADE BY US,  
JUST FOR YOU**



EGB INTERIOR DESIGN

32 rue Edmond Dune  
L-1409 Luxembourg

Tél. +352 489 999 1  
hello@egb.lu  
www.egb.lu







WELL ET ËM MÄINT GEET



### Moving

- National & international moves (Europe and Overseas)
- Office Moves
- Relocation services



### Storage

- Household goods
- Vehicles (Cars, Bikes,...)
- Warehousing
- Oversized and heavy goods



### Archiving

- Archive management
- Archive Storage
- Digitalization



### Destruction

- Rental of recycling bins
- Data destruction (Paper, Hard Drives, USB's,...)



### Last-Mile

- Logistics
- Delivery
- Installation

[www.streff.lu](http://www.streff.lu)



+352 31 09 21



[service@streff.lu](mailto:service@streff.lu)



Strassen/Windhof



# BIG



Votre Bijouterie-Joallerie à la Belle Etoile



ISABELLE  
**KASS**  
BIJOUTERIE  
JOAILLERIE

T+352 34 85 38 [www.isabellekass.lu](http://www.isabellekass.lu)



# EVEIL DES SENS

Centre de médecines douces  
et produits de bien-être



Aromathérapie  
Ateliers  
Art thérapie adultes/enfants  
Cicatrices



Dien Chan, Chan'beauté (réflexologie faciale)  
Douleurs, stress et anxiété

Massages  
Soins énergétiques  
Thérapies brèves



## SPECIAL

# Thanksgiving

A GAGNER !  
1 DIFFUSEUR VERALIA  
VALEUR 85€



Pour participer, envoyez :

vos nom + prénom + n° téléphone  
à l'adresse : [eveildessenslux@gmail.com](mailto:eveildessenslux@gmail.com)

TIRAGE AU SORT LE 3.12.24\*

\*Retrait du lot avant le 14.12.24 en boutique uniquement.  
En participant au jeu, vous acceptez de vous inscrire à la newsletter. Non échangeable contre un autre produit ou soin ou valeur monétaire. Jeu gratuit sans obligation d'achat.

EVEIL DES SENS  
80, Avenue Emile MARK  
L-4620 Differdange  
Tél : (+352) 28 77 10 07  
Mail : [eveildessenslux@gmail.com](mailto:eveildessenslux@gmail.com)  
[www.eveil-des-sens.lu](http://www.eveil-des-sens.lu)

# Fresh and healthy food

for you and your colleagues



Contact us at  
[delivery.luxembourg@exki.com](mailto:delivery.luxembourg@exki.com)  
for more informations



# GERIC LOCATION

## Our Services

- Geric Transport Sàrl, a Luxembourg company, offers a safe and professional car rental service.
- Quality services at affordable prices, the most comfortable vehicles with enviable performance, adapted to your needs.
- Many years of experience enable us to respond quickly and efficiently to customer requests.



<https://gericlocation.lu/en/>

### CONTACT US

+352 691 773 990

[info@gericlocation.lu](mailto:info@gericlocation.lu)

6, rue de l'Ecole  
L-3335 Frisange





**lalux**<sup>+</sup>  
ASSURANCES

DON'T WORRY

*be happy*

# LUXFLY

Tripadvisor  
Travelers'  
Choice Awards  
Best of the Best



## Christmas GIFT IDEA



GIVE THE GIFT OF FLIGHT THIS  
CHRISTMAS WITH A

VALID 12 MONTHS  
**GIFT VOUCHER**

Surprise your loved ones with an unforgettable adventure that soars above the rest. Perfect for all ages and abilities, a LUXFLY gift voucher is the ultimate present for thrill-seekers and fun-lovers alike.



PROMOCODE: -10 EURO

AMCHAM24

SHOP NOW

[WWW.LUXFLY.EU](http://WWW.LUXFLY.EU)

LUXFLY - RUE DE GRASS 103 - 6700 STERPENICH





ONE SPACE  
-  
ONE OBJECTIVE



**BREATHE, MOVE, FOCUS IN THE PRESENT MOMENT, BE HAPPY.**

OUR CLASSES AND WORKSHOPS ARE BUILT TO HELP YOU IMPROVE PHYSICAL AND MENTAL WELL-BEING. OUR YOGA PRACTICE IS ROOTED DEEP IN TRADITION BONDING PHILOSOPHY, ASANAS, PRANAYAMA (BREATHING), AWARENESS AND FOCUS, MEDITATION. ALL BALANCED INTO A MODERN CUT.

*Classes, Workshops, Events, Corporate, Retreat, Teacher Training*

#AMCHAM 20% of on a class pack option

78, RUE DE BONNEVOIE - [WWW.MANAYOGA.LU](http://WWW.MANAYOGA.LU) - [CONNECT@MANAYOGA.LU](mailto:CONNECT@MANAYOGA.LU)



MERCI NATURE

#### NOTRE HISTOIRE

MERCI NATURE est né de la passion d'Agna de Carvalho pour le textile et de ses années d'expérience dans le milieu de la mode, d'abord comme actrice-mannequin en 2004, puis comme gérante d'une boutique d'une créatrice portugaise en 2010, avant de se lancer avec sa première boutique à Lisbonne en 2011. Après son arrivée à Luxembourg en 2013, elle s'est remise à la création durant son temps libre avec un petit atelier de couture dans son garage pour elle. Puis ses copines ont commencé à voir ses créations et ont demandé qu'elle leur réalise aussi des vêtements. C'est alors qu'elle a décidé de se lancer à nouveau et de créer sa propre marque au Luxembourg. Et, en 2017, MERCI NATURE a été créé après un an de travail acharné et passionné.

#### NOS VALEURS

##### Un esprit et un service MN

Fort de son amour pour les belles matières naturelles, ainsi que de sa longue expérience, Agna de Carvalho a imaginé et conçu MERCI NATURE de toutes pièces jusqu'au moindre détail, afin de voir ses clients satisfaits et heureux de porter ses créations réalisées avec soin et amour.

Elle la définit toujours comme une marque luxembourgeoise aux origines portugaises. Sa préférence pour les matières et matériaux d'origine naturelle et de grande qualité ainsi que sa profonde gratitude pour la nature sont au cœur du projet. Agna de Carvalho a repris et gardé les mêmes fournisseurs depuis ses débuts dans le textile à Lisbonne en 2010, car ce sont des personnes très importantes pour elle et, ensemble, ils forment une famille, chacun apportant son savoir-faire dans sa spécialité. Tout le processus de fabrication des collections MERCI NATURE est accompagné par Agna de Carvalho : la conception, le choix des matières premières, les détails de la marque lors de la confection. Le projet préconise aussi la réutilisation des matières, comme, par exemple, à partir d'une robe, faire un ensemble ou un sac à main.

#### NOS SERVICES:

Sur Mesure  
Donner une nouvelle vie à vos vêtements  
Conseils en image  
Entretien

8, côte d'Eich  
L-1450 Luxembourg-Ville  
(Près du restaurant Um Diergen)  
+352 26 20 03 36



[www.mercinature.lu](http://www.mercinature.lu)  
[contact@mercinature.lu](mailto:contact@mercinature.lu)  
+352 661 60 42 97



# NiCE

*good times ice cream*

As an **AMCHAM** member,  
enjoy a 10% discount on  
our products \*

\*for purchases above EUR 40

© nice.luxembourg

128 Avenue du X Septembre L-2550 Luxembourg

🌐 nice-lu.com

DECEMBER 2024



**FREE FRAME\***

\*Ask in store for conditions

 **Optic 2000**  
*Liberté*

27 avenue de la liberté  
L-1931 LUXEMBOURG  
(+352) 26 29 61 80

Recognized for  
Excellence:



# Phoenici

At Phoenici, we provide advanced **Identity Protection Solutions** for individuals and businesses, along with expert services in **(AML) Anti-Money Laundering, (KYC) Know Your Customer, and Compliance Audits**.

We are committed to securing your data and helping you meet regulatory requirements, including **GDPR and Cybersecurity protocols**.

Our comprehensive solutions cover protection, prevention, and education to ensure your peace of mind.



## IDEA: Ensure Regulatory Compliance

Our **ID Entity Audit (IDEA)** service specializes in **Anti-Money Laundering (AML)** and **Know Your Customer (KYC)** compliance. By implementing stringent audits and data management, we ensure that your business adheres to all relevant **GDPR and AML/CFT regulations**.

Secure Your  
Business Today  
-  
Schedule a  
Consultation

[www.phoenici.com](http://www.phoenici.com)  
[info@phoenici.com](mailto:info@phoenici.com)

☎: +352 28 89 28 18  
☎: +352 671 042 502

## E-Learning Program: Empower Your Teams

Stay compliant and informed with our **E-Learning Program**, offering professional training on **GDPR, AML/CFT principles**, identity protection, and **cybersecurity**. Our sessions are tailored to your organization's needs.

Trusted and Certified by  
Industry Leaders  
Member of the Luxembourg Compliance  
Officer Association



Recognized by the Luxembourg House of  
Cybersecurity



NEW

# Melts

ONLY 9.50€



Exclusively at Foetz, Beggen, Strassen, Rodange, and Place d'Armes

FitLine®



[www.fitline.com](http://www.fitline.com)

Experience results.

# Sagora...

Learning means  
taking charge.  
Your journey  
starts here.



## Discover our trainings in financial management

### Finance for Managers

October 2024 - April 2025, Luxembourg (French)  
February 2025 - June 2025, Luxembourg (English)

### Portfolio Management

17 - 18 March 2025, Bruxelles (French)  
22 - 23 May 2025, Luxembourg (French)

### Risk Management

19 - 21 May 2025, Luxembourg (French)



## Why Choose Sagora ?

**Our courses** are designed keeping both companies and individuals in mind, and cover all training needs in the fields of business, risk and portfolio management.

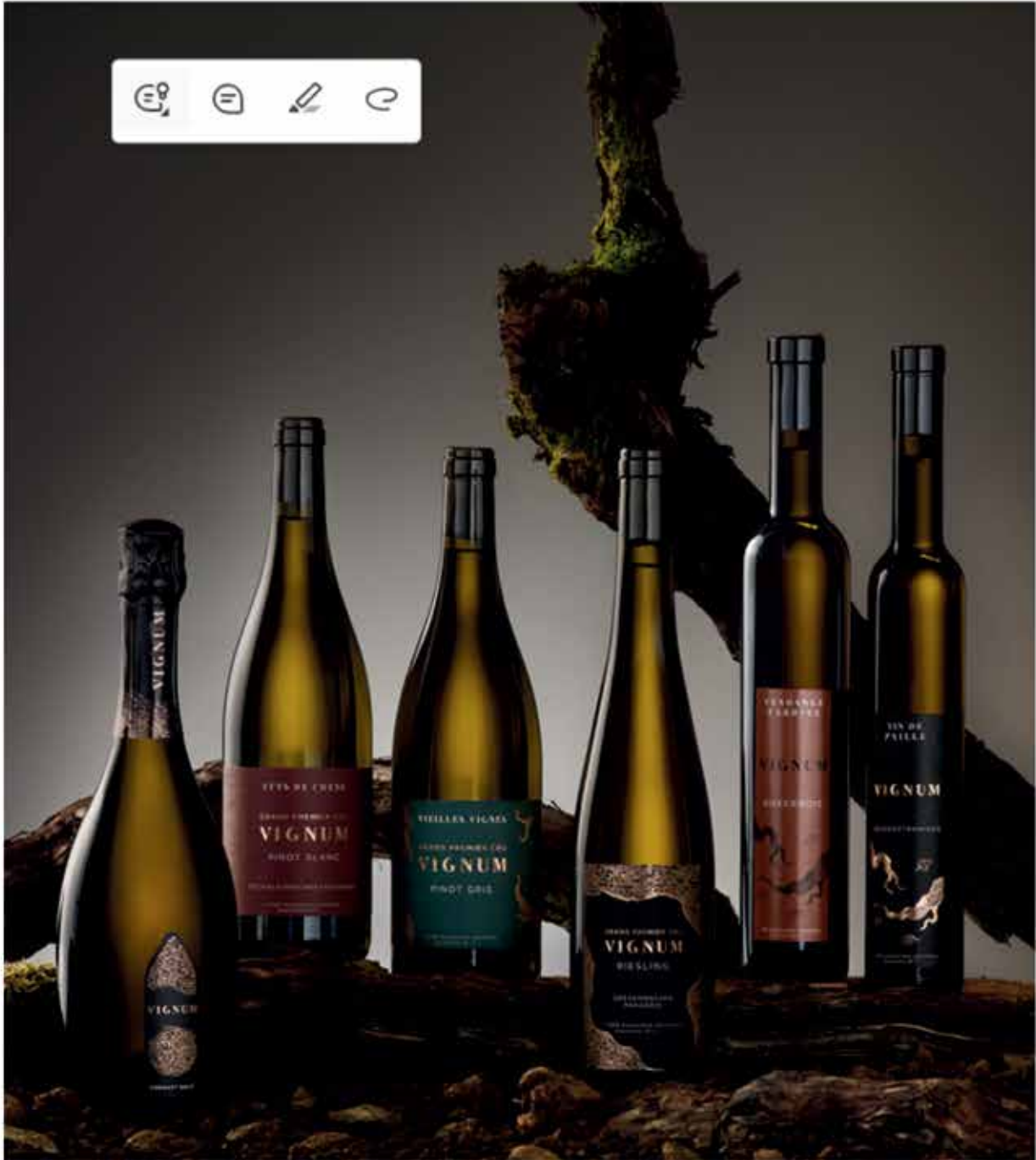
**Our methodology** places the participant at the heart of the learning process. It aims to boost learners' autonomy through rigorous, relevant and interactive training courses whose lessons are directly applicable, while keeping a critical eye on the results processed by the learners.

**Our participants** repeatedly and enthusiastically testify to the excellence and relevance of our trainings, and the inclusive and accessible approach we take so everybody can dive right in, regardless of their background.



For more information, please consult our web site [www.sagora.eu](http://www.sagora.eu) contact us at [formations@sagora.eu](mailto:formations@sagora.eu).







- 5 à SEC
- ACADEMY OF LUXEMBOURG IN MARTIAL ARTS
- Açai
- ADAGIO APARTHOTEL
- ADNOVO - PET FOODS (Cats, Dogs)
- AELIA Duty Free
- AIRLUX-LIMO-TAXIS
- AIRSOFT & MILITARY SHOP
- ALBERT STREFF SARL & CIE SECS
- ALENA INSTITUT
- ALKEMIA DANCE SCHOOL
- ALLWINE S.A.R.L (BIO WINES)
- AMNEVILLE – POOL & SKATING RINK
- APOSTROPHE
- APV Productions Saràl
- AQUALIBI Belgium
- ARLETTE CREATIONS
- ARTISANALE – Artisan Bottle Shop
- ART-Management Luxembourg
- ATELIER-FLOU – Perfumes
- ATOMY
- B17 Luxembourg Business Club
- BANJJAK – K. Beauty & Fashion
- BEAUTY SPA by Luzmila
- BEBIKE Saràl
- BELLEWAERDE AQUAPARK, BE
- BEYOND NUTRITION – Supplements
- BIJOUTERIE HOFFMANN, Grevenmacher
- BIJOUTERIE ISABELLE KASS
- BLEU MARINE VOILIER
- BLUMMENBUTTEK BEIM BONSAI
- BOGGI Milano
- BOROMIDD! Vins Fins de Hongrie
- BOUCHERAT EVENT MANAGEMENT
- BOUTIQUE MARIANNE
- BRAVO IMMOBILIER
- BURGER KING LUXEMBOURG
- CABINET APTNESS – Aide et Soutien Psychologique
- CAFE OP DER BRECK, Wormeldange
- CANNATHEQUE S.à.r.l.
- CAP SUR LA SOPHROLOGIE saràl
- CBXSE Sarl. Express Transport Logistics Services
- CELESTIAL ANTI AGE CENTER – GLOBE
- CENTER PARCS FRANCE (4 DOMAINES) + VILLAGES NATURE
- CENTRE POMPIDOU – Metz – Museum – Art Gallery
- CINEMOTION Private Home Cinema
- CITY HOTEL Luxembourg
- CITY HOTEL Luxembourg
- CLAUSEL – Luxembourg City Beer
- COCONSULT Sarl
- COGNAC EXPERIENCE S.A.R.L.
- COUNTRY CONCEPT Events & Interior Decoration
- COUNTRY RADIO GILSDORF & US STORE
- CREATIVE ACADEMY SHOP
- CRYOPÔLE – LU (CRYOTHERAPY)
- CYRILLUS
- DAMMANN Frères Luxembourg
- DANCE FACTORY
- DARMAXIS Sarl
- DAVID GHISA – Family and Wedding Photographer
- DEGRE 110 CRYOTHERAPY
- DESIGNER OUTLET Luxembourg
- DIOSFIT SÀRL – FITNESS & GYM
- DIVEWINNS Scuba Diving School
- DOGWALKER. LU – GROOMING
- DUPONT&JENSEN CONCIERGE SERVICES
- ECLAT DE VERRE (Paint , Photo Framing)
- EDMOND WELTER & FILS
- EDUCATION FIRST – LANGUAGE TRAVEL
- ELECTRO HAUSER
- ELECTRO TRINDADE Saràl
- ESCAPADE
- EURO SPACE CENTER
- EVEIL-DES-SENS – Wellness
- EXECUTIVE LANE – Premium Limousine Services
- EXKi Nature's Kitchen
- EXTEAM GROUP SARL – Online Sales Platform
- FEIER -A-FLAM (BBQ SHOP)
- FERBER Hair & Style (ONLINE)
- FIISSCHEN CONCEPT
- FLOWBOX Yoga and Crossfit
- FLY AND DRIVE Simulators
- FORMATICUS – BAR A FROMAGES – CHEESE BAR
- FOX DRINKS LUXEMBOURG
- FRANCINI\_K Fashion Designer
- GALERIE MODERNE GREVENMACHER Furniture
- GARAGE KAUFMANN Saràl
- G-ART – Sportswear Design
- GENAVEH Luxembourg Chocolates
- GENEST IMMO
- GEORGIAN PRESTIGE S.A.
- GERIC Transport Saràl
- GIN(E)PRO – GIN
- GOERES HOTELS LUXEMBOURG
- GOLF DE PREISCH – Basse Rentgen – France
- GUO CHA CLUB – TAIWANESE BUBBLE TEA
- HALTERNATIVES (BIO)
- HAPPY GARDENS & MORE
- HARNEY TEAS (Online Orders)
- HÄSTENS FURNITURE
- HELSINKI Lifestyle

- HEROISMO.SHOP – Leisure Clothes
- HERTZ RENT-A-CAR Worldwide Discount
- HI-FI INTERNATIONAL
- HOFSTEDE Insights Luxembourg
- HOTEL DO PARQUE, CONGRESS & SPA, VISEU PORTUGAL \*\*\*\*
- HOTEL MOINHO DE VENTO , VISEU-PORTUGAL \*\*\*
- HOTEL ROYAL, Luxembourg
- HOUSE OF FITNESS 360
- HOUSE OF UNDERWEAR, Lux City
- HUGO BOSS
- HWS ALCOHOL SHOP
- IKKS
- INLINGUA
- INVITATION AU VOYAGE
- JADO – Gifts from Luxembourg
- JESTUDIO  
ELECTROMYOSTIMULATION
- JOAILLERIE FABIENNE BELNOU
- JOHRI OPALINE – Jewelry – Designed in Europe
- JOY INSTITUT – Massages
- JUST ZEN – Cabinet de Massage & Wellness
- JVB CHAMPAGNES, Luxembourg
- KARANTA Luxembourg (Tennis Shop)
- KAZAKIWI Hotel – Luxembourg Gare
- KBEEF – Restaurant (Auchan Kirchberg)
- KNOPES COFFEE SHOP
- KRISTINA BAGROVA PERMANENT MAKEUP
- KUSMI TEA
- L'ARMOIRE – Clothing and Shoes for Men and Women
- L'OCCITANE EN PROVENCE
- LA CHOCOLATERIE RG – Pétange – Our store is exclusively online.
- LALUX ASSURANCES
- LA-PETITE-EPICERIE, City Concorde
- LAVILLAB Wellness – SPA – Steinsel
- LD INVEST S.A.
- LETZ.COFFEE (Online Orders)
- LEVI'S JEANS LUXEMBOURG – CLOCHE D'OR + LUXEMBOURG CITY
- LIBRAIRIE DES LYCEES, Book Shop, Limpertsberg
- LUXDATES – Introduction Agency
- LUXEMBOURG TIMES Magazine
- LUXEMBOURG WINE & SPIRIT ASSOCIATION
- LUXFLY INDOOR SKYDIVE S.A.
- MAEVA.COM (FRANCE)
- MALT Innovative Factory
- MAMA SHELTER HOTEL LUXEMBOURG
- MAMA SHELTER LISBON
- MAMER PLAGE RESTAURANTE
- MANA YOGA
- MANSFELD SPIRITS LUXEMBOURG
- MARCELLO ICE CREAM
- MARCUS NEAL FITNESS S.à.r.l
- MAROQUINERIE KELLER (SARL)
- MAVELOS Sàrl
- MAXPOINT
- MELLIS – Finest Honey Products
- MERCI NATURE Ladies Clothes Shop
- MI TIERRA – American & Latin American Grocery Store
- MILLION HAIR – Hair Salon
- MJ FITNESS Sarl (KRAV MAGA CENTER “by Kickyoufit”)
- MONA WIE – Fashion Brussels
- MONTALE & MANCERA PERFUMES LUXEMBOURG
- MOTKO
- MOVEMENT FIX
- MUNHOWEN / DRINX / LE CHAI
- NAMASTE-LUX – enjoy life
- NAMUR – Confiserie
- NATHACIA Spa & Academy
- NEXT.SPACE, LU
- NICE – good times ice cream
- NO.RAINER – LUXEMBOURG
- NUTCHEL Forest Village Les Ardennes and NUTCHEL Forest Village Alsace
- OINEAS Wine Lab – Greek Wines
- OLD SCHOOL BARBERS
- OLGA EYES BEAUTY SARL-S
- OPTIC 2000 – Liberté, Kirchberg
- OPTICAL CENTER Optique & Audition
- OPTIQUE CLEMENT & GRASSINI
- ORTEA Sàrl
- OUR CHOICE, Luxembourg
- PANAMA TOURS & SCUBA
- PAULA COIFFURE
- PERFECTUS – Perfect Fitness Training
- PETILLANCES Sàrl
- PIDAL – Piscine Intercommunale de l'Alzette – Helmsange
- PIERRE & VACANCES (FRANCE)
- PIZZA HUT
- PROBST DCB
- PURPOSEFULVIBES
- RAK PORCELAIN EUROPE S.A.
- RAMBORN CIDER Co.
- RCI – REFFAY Christophe Immobilien S.à.r.l.
- Restaurant – Pizzeria OP DER MILLEN – Medernach
- RESTAURANT SIXSEVEN
- RETOUCHE CRIS

- RETOUCHE CRIS
- RISTORANTE CENTO VINI
- ROCK SPA & WELLNESS – Esch-sur Sûre, Luxembourg
- RODIGHIERO PNEUS (Tyres etc) (3 Places) + Arlon
- ROUDE LEIW BOUNEKAFFI (Online Orders)
- ROYAL CAVIAR – Quality Caviar Online
- ROYAL SUNSHINE Sàrl
- S.O.S. Phone Fix
- SAGORA – Finance Training Courses
- SCANSHOP Scandinavian and Nordic Specialities
- SIMSALABIM – Party Clothes
- SMART BABY SHOP
- SONY CENTER Luxembourg
- SPA ESCAPE
- SPARX FACTORY
- SPEAKUP LANGUES
- SPORT4LUX
- STARBUCKS: Airport, Kirchberg, Cloche d'or
- SUBTILE Sàrl
- T HAIR Cosmetics & EMPORIO DEL UOMO Cosmetics
- The CAR'TELL (Private Members Club)
- THE GOLF STORE by All Square
- The Happy Cyclist
- THE LEARNING DISTILLERY (E-learning design agency)
- THE LUXEMBOURGISH CASK SELECTION
- THE OFFICE
- THELUX / TEEGSCHWENDNER
- TIME TO BE O (Natural Products)
- TONIC (TonicFood Online Shop)
- TOP KRONOS – ELECTRICAL APPLIANCES
- TravelPro American Express GBT
- TWISTED CAT / KANTIN – Brewpub Dudelange
- VELOCENTER GOEDERT
- VI (E) Sàrl
- VIA MILANO
- VIA MODA
- VINOTECA
- VINS DIVINS S.à.r.l.
- WALIBI Belgium
- WATER ADVENTURES REMICH
- WEBTAXI Luxembourg
- WELLNESS by JANE (Beauty Institut)
- WIDOO S.A. (B-2-B)
- WINE4U Sàrl
- WOLFF BREW Luxembourg
- WOLFORD BOUTIQUE, Luxembourg, Brussels, Knokke, Brugge & Gent
- ZOO AMNEVILLE
- ZOO AMNEVILLE B2B Events & Services



A special thank you for your support and collaboration.

**Editor of the catalog:**

THE LEARNING DISTILLERY, Petre Bica

**Sponsors of the MBC Breakfast Event:**

Phoenici - Giovanni Patri

Pizza Hut - Alexandre Scholer

Travel Pro American Express - Mirko Persuric

**Sponsors of Tombola Prizes for Thanksgiving:**

Automobile Club - ACL

Boutique Elisabetta Franchi

Cuir Shop Dudelange

Ferrero

Hotel The Royal

Jewellery Isabelle Kass

Luxair

RAK Porcelain

Ramborn

Travel Pro American Express

Turkish Airline

**Sponsor of the Million Roses Decoration:**

Byborg

**Sponsor of the Wine:**

Vinsmoselle