



Newsletter

The latest news, views, and announcements

INSIDE

▶ **Chairman's Remarks**



A Message from our Chairman, Paul Schonberg



Cover Page

Winter Carnival Party

Photo Booth Gallery

Paul's Picks of the Week

Upcoming Events & Provisional Events Calendar

Highlights from IWD

Omnibus Package: A critical opportunity for Europe's future

AmCham Member Benefits Club

AmCham Member News

Weekly Highlights

News Roundup

What's on

Useful links

WINTER CARNIVAL PARTY



Photo Gallery

This newsletter is kindly sponsored by:



Photo Booth Gallery from the Winter Carnival Party

Look back at a wonderful evening of fellowship and friendship. Can you find your picture? Just a heads-up, there are nearly 200 to scroll through...



[Photo Booth Gallery](#)

Paul's Picks of the Week

RECIPE



Dessert: 'Verwurrelter'

QUOTE

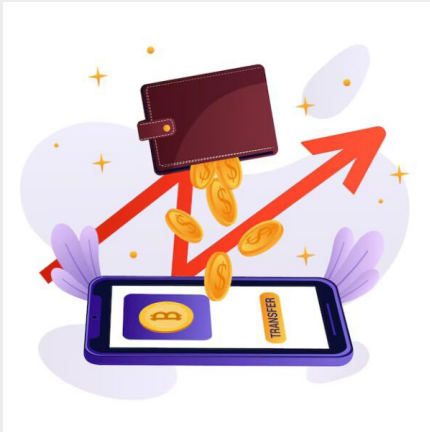
It's easy to make a buck. It's a lot tougher to make a difference.

Tom Brokaw

BrainyQuote®

UPCOMING EVENT ON APRIL 3

Fund Tokenization: Exploring the Future of Luxembourg



The Digital Committee of the Luxembourg chapter of the American Chamber of Commerce, in collaboration with Allen & Overy Shearman Sterling, cordially invites you to an exclusive event on Fund Tokenization.

REGISTER

21.11.2025



Thanksgiving Gala Dinner

REGISTER

24.03.2025

🍴 ABAL LUNCH 🍴



150 000

Respondents



600

Organisations



180

Countries

Understanding Employee Needs and Expectations across the globe

REGISTER



2025 PROVISIONAL EVENTS CALENDAR

FEBRUARY	MARCH
<ul style="list-style-type: none"> February 28 Winter Carnival Party 2025 at the Doubletree Hilton Hotel 	<ul style="list-style-type: none"> March 4 Int'l Women's Day event at PwC Cloche d'Or March 24 ABAL luncheon A Cultural Guide to Management - Understanding Employee Needs and Expectations Across the Globe
APRIL	MAY
<ul style="list-style-type: none"> April 3 Fund Tokenization: Exploring the Future of Luxembourg at A&O Shearman April 24 Talent Attraction at A&O Shearman 	<ul style="list-style-type: none"> May 30 Tools4Lux Committee - Orientation course at Amazon
JUNE	JULY
<ul style="list-style-type: none"> June 2 Transatlantic Trade and Investment 2025 event at Deloitte 	<ul style="list-style-type: none"> July 1 ABAL luncheon (topic tbc) July 5 & 6 International Polo tournament in Merl (tbc)
AUGUST	SEPTEMBER
	<ul style="list-style-type: none"> September 1 ABAL luncheon (topic tbc)
OCTOBER	NOVEMBER
<ul style="list-style-type: none"> October 3 Tools4Lux Committee Orientation course at Amazon October 15 Real Estate Committee affordable housing event at GridX in Wickrange (tbc) 	<ul style="list-style-type: none"> November 12 Joint Personal Tax event with BCC (venue tbc) November 21st Thanksgiving Gala dinner at Cercle Cité

Highlights from International Women's Day



For the eighth continuous year, PwC, Baker McKenzie and AmCham celebrated International Women's Day (IWD) as an iconic moment to reflect on how far we want to push the gender needle in today's society.

[Read more](#)

Omnibus Package: A critical opportunity for Europe's future



Europe's heavy regulatory burden remains a key concern for transatlantic business, with 84% of our members citing it as a major barrier.

[Read more](#)

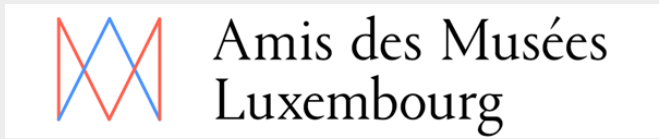


**AmCham
Member Benefits Club**



[Read more](#)

Friends of Museums Luxembourg: Your Gateway to a World of Art and Culture



Since 1977, Les Amis des Musées Luxembourg (Friends of Museums Luxembourg) have been dedicated to enriching art collections, preserving cultural heritage, and promoting art and history.

[Read more](#)

Partner of the week



[Specials for March 2025](#)



[Read more](#)



AmCham Member News

Welcome New Members & Online Membership



[Why become a Member?](#)

[Online Membership form](#)

[!\[\]\(51514032c8ca341817228f39f1307b05_img.jpg\) Welcome New Members](#)



Weekly Highlights

- ▶ [RTL Today - Luxinnovation director: Mario Grotz highlights importance of US-Luxembourg relations \(+\)](#)
- ▶ [ALFI- Europe remains a global leader in sustainable finance with EUR 2.2 trillion \(+\)](#)
- ▶ [LTI: Luxembourg's AutoMobility Incubator: A Gateway to Europe \(+\)](#)
- ▶ [STATEC: Car Dependency Persists for Commuting \(+\)](#)
- ▶ [EU: Commission launches new cybersecurity blueprint to enhance EU cyber crisis coordination \(+\)](#)

LUXEMBOURG TIMES



Google feels the love and opens Luxembourg

[Read more](#)

Chronicle.lu



(L-R) Carlo Thelen, Director General of Luxembourg Chamber of Commerce; Lex Delles, Luxembourg's Minister of the Economy, SMEs, Energy and Tourism; Tom Baumert, President of GIE National Observatory of SMEs, CEO of Luxembourg Confederation; Credit: MECO

Retail Report shows 73% increase in Pop-Up shops since 2019

[Read more](#)



Read more



Read more

Info Hub: Useful Links & Information

Subscribe Today!

→ [Click here to subscribe now](#) ←

Cancel anytime



American Chamber of Commerce in Luxembourg

6, rue Antoine de Saint-Exupéry
L-1432 Luxembourg
Phone: +352 43 17 56

I am informed that I can object to the processing of my personal data for marketing purposes at any time, either by e-mail addressed to info@amcham.lu or by clicking the link [Unsubscribe](#).

[Preferences](#) | [Unsubscribe](#)

Forward

Share

Share

Tweet